

COMMUNE



Le Revest - les eaux

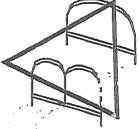
Place Jean Jaurès
83 760 LE REVEST LES EAUX

Agence: Empreintes Méditerranéennes

Pas de la Blinette
Chemin de la Berre
83 000 TOULON

Tel: 04.94.36.04.22
Fax: 04.94.31.22.74

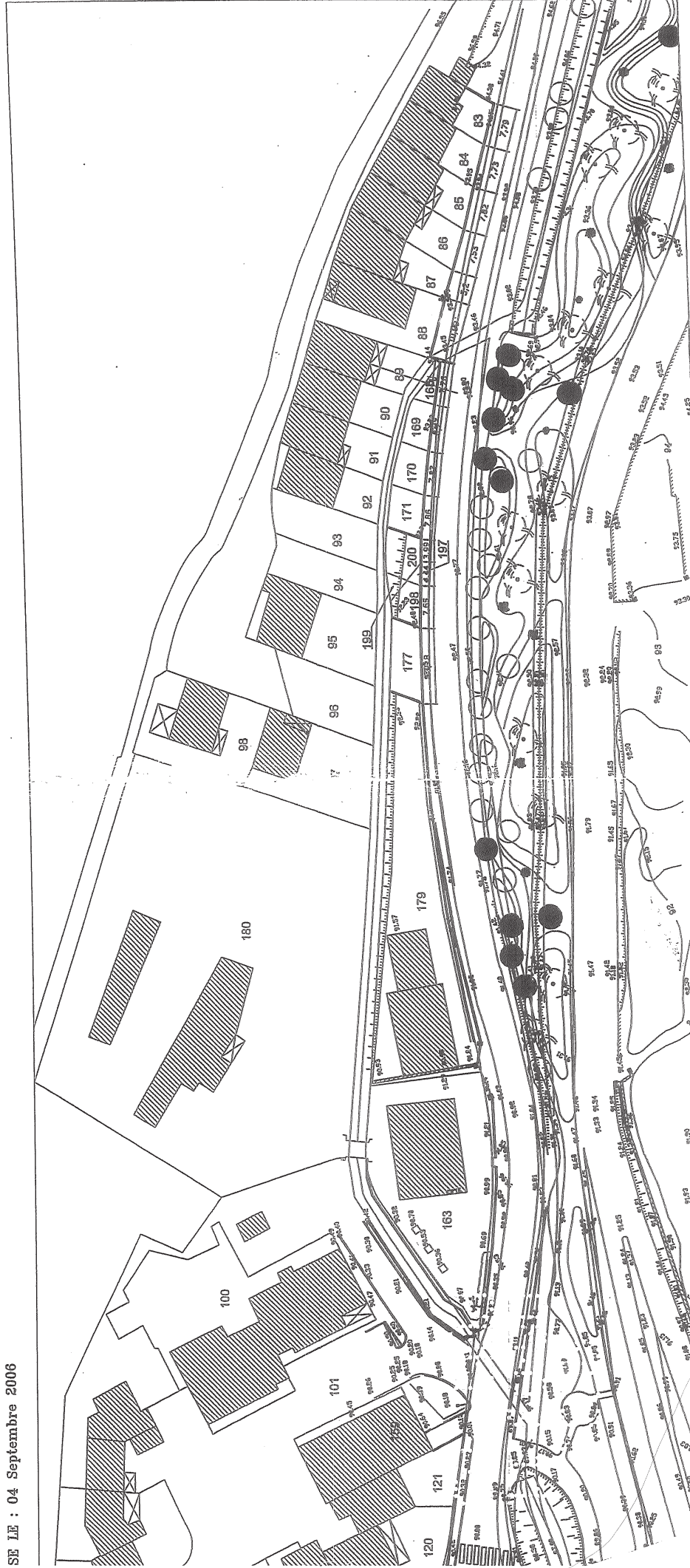
Site : <http://www.frenchlandscapa.net>
E-mail : eping@wanadoo.fr



Quartier de la Ripelle

PRECONISATIONS DE MONTAGE DE MURS EN FRONT URBAIN

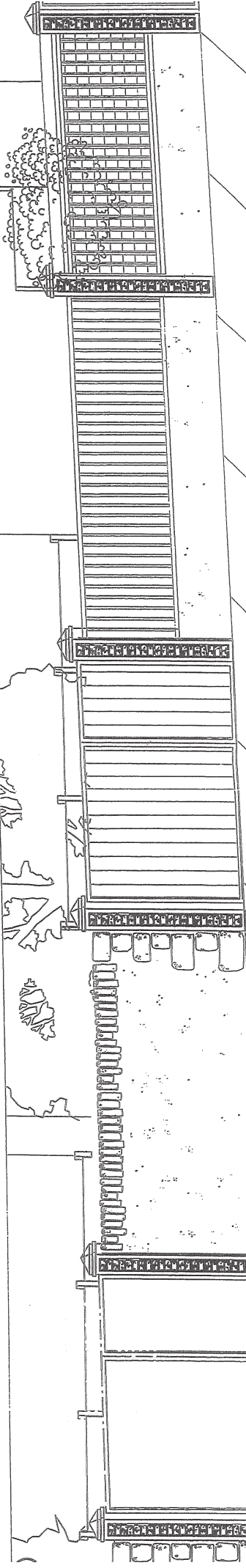
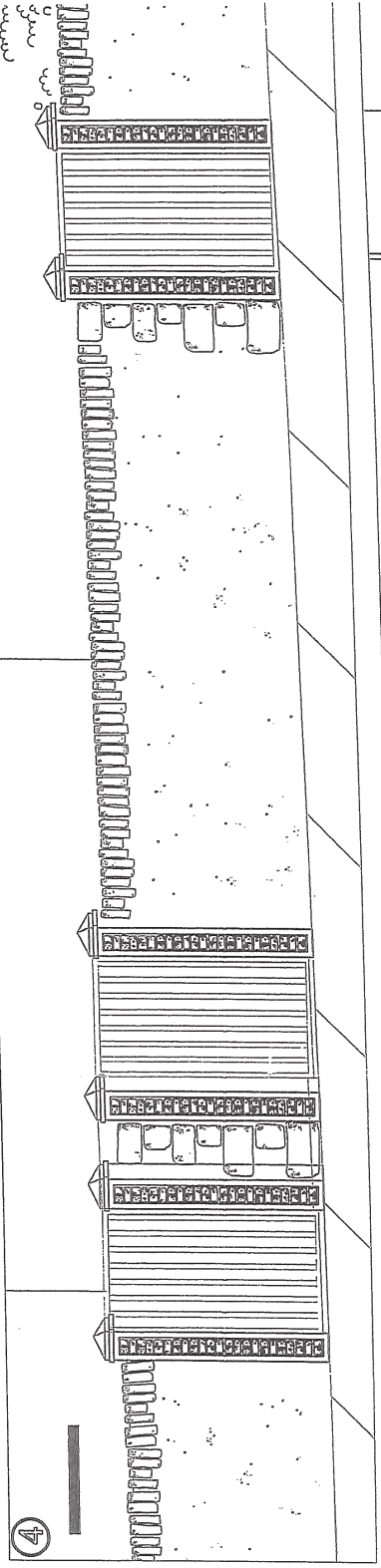
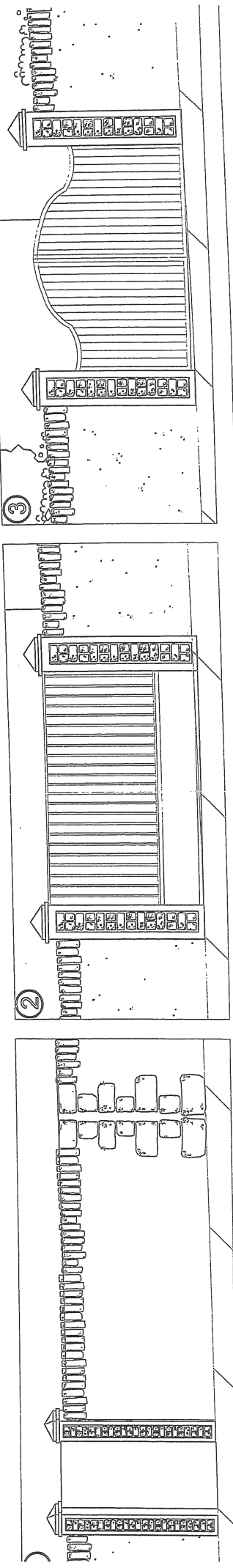
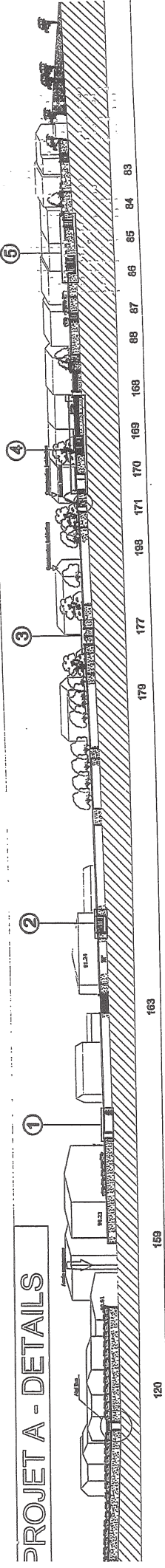
SE LE : 04 Septembre 2006



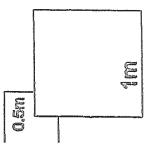
B

Quartier de la Ripelle PRECONISATIONS DE MONTAGE DE MURS EN FRONT URBAIN

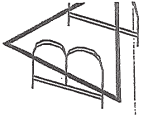
PROJET A - DETAILS



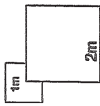
éch. 1/50ème



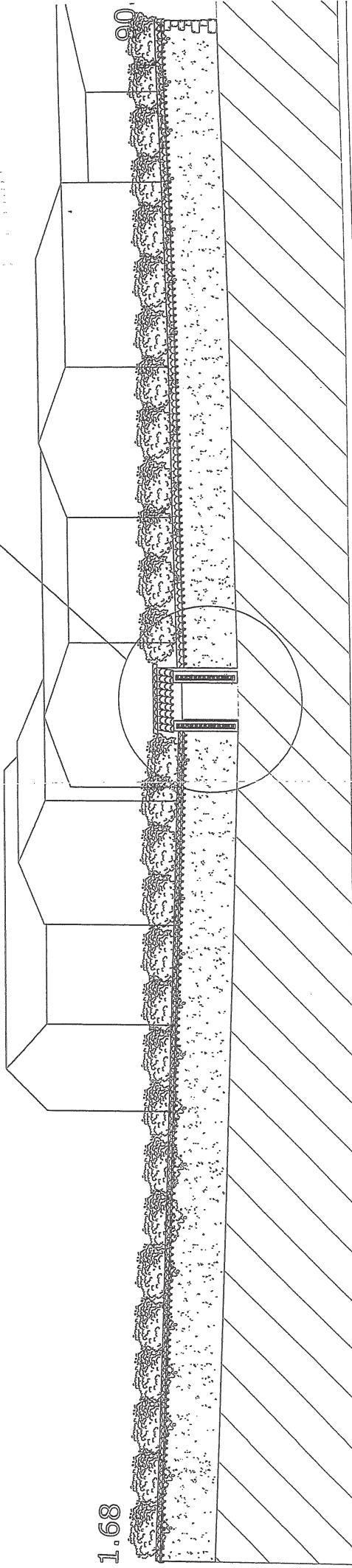
Quartier de la Ripelle
PRECONISATIONS DE MONTAGE DE MURS EN FRONT URBAIN



PROJET A - PLANCHE 1



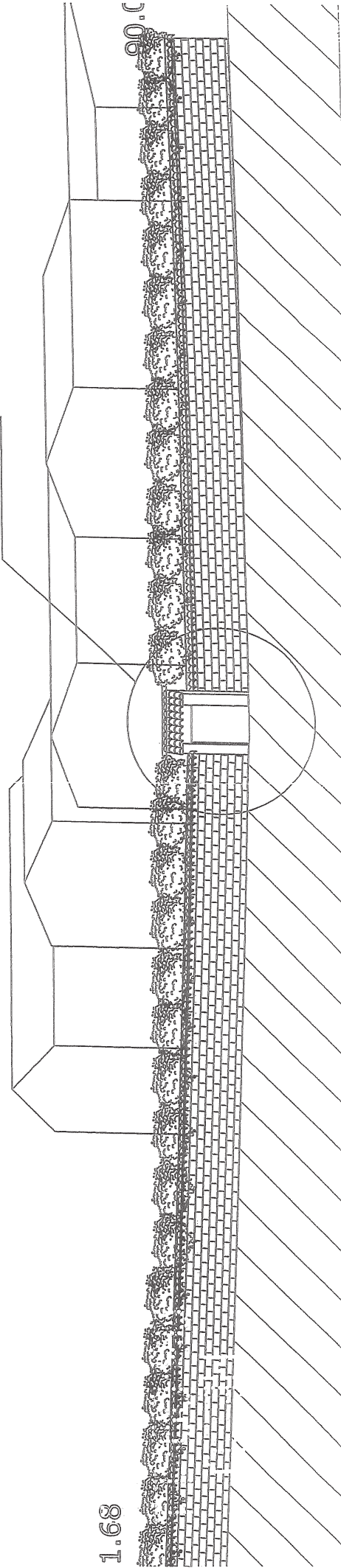
Abri Bus



1.68

EXISTANT

Abri Bus



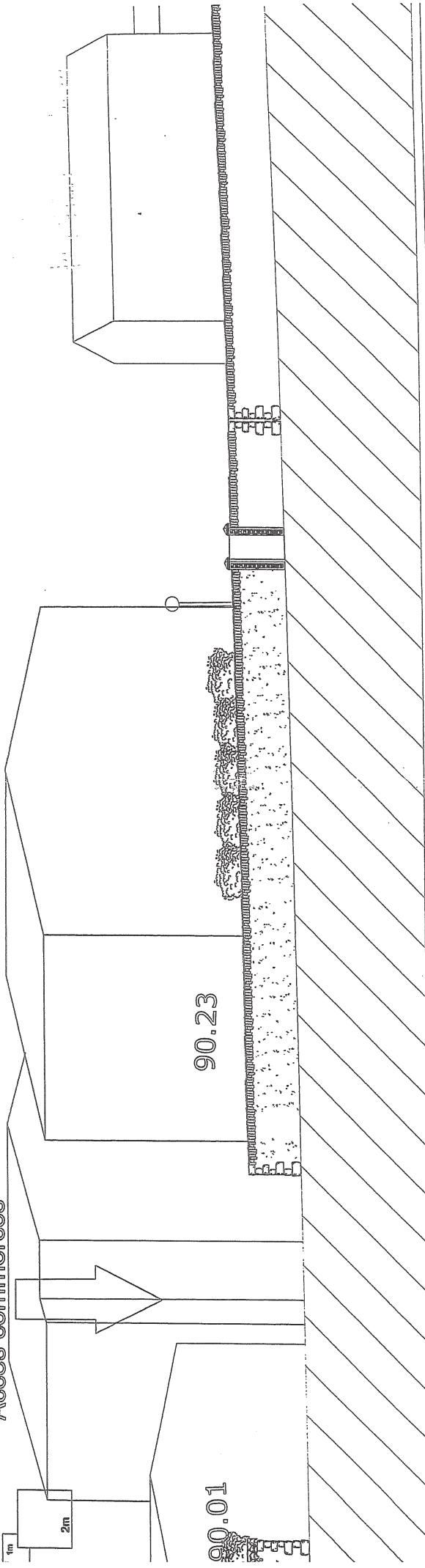
1.68



Quartier de la Ripelle
PRECONISATIONS DE MONTAGE DE MURS EN FRONT URBAIN

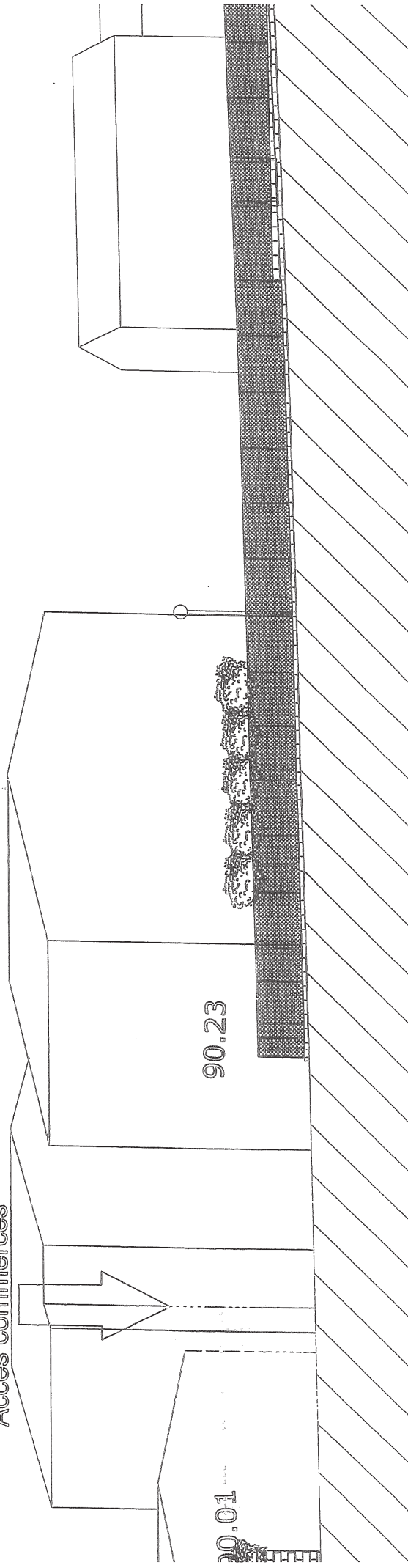


PROJET A - PLANCHE 2
Accès commerces



EXISTANT

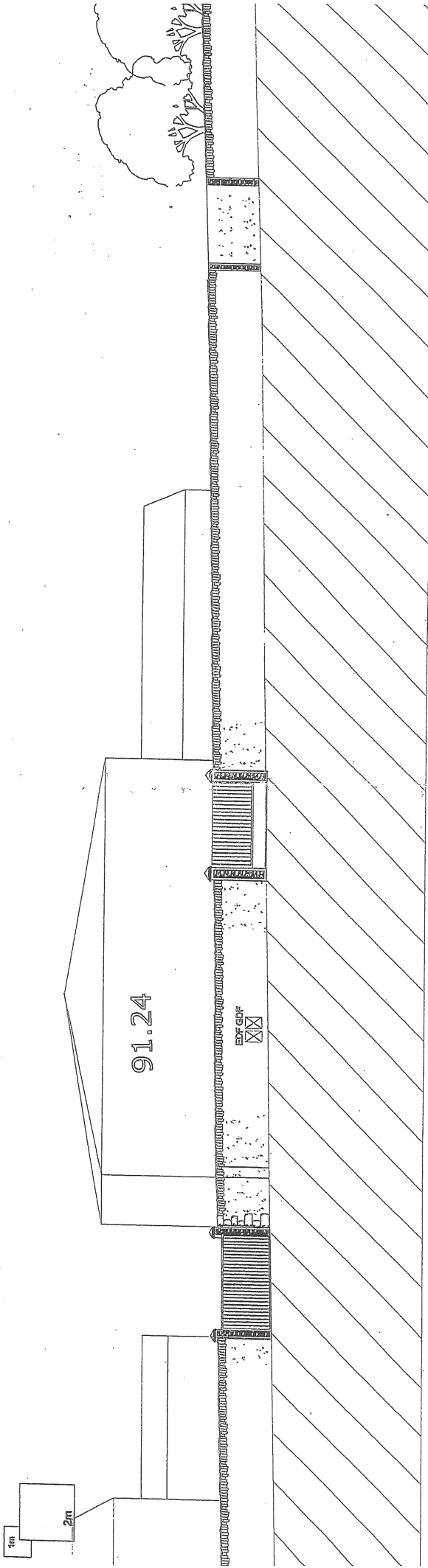
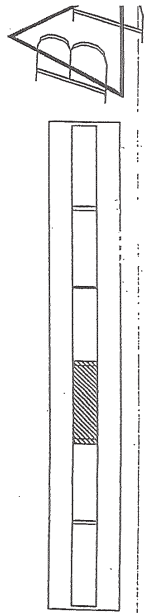
Accès commerces



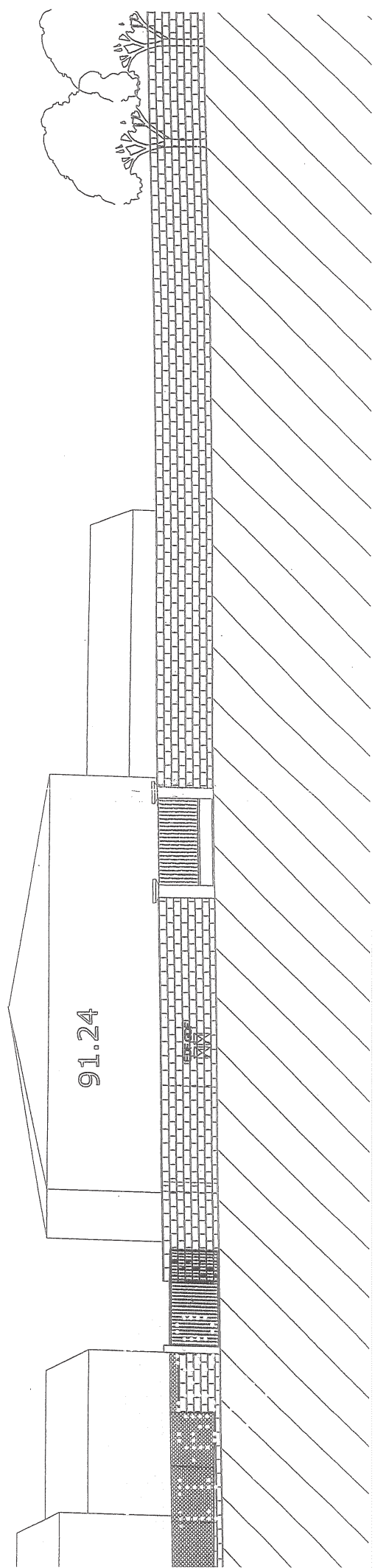
Quartier de la Ripelle

PRECONISATIONS DE MONTAGE DE MURS EN FRONT URBAIN

PROJET A - PLANCHE 3

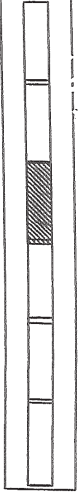


EXISTANT

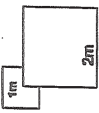


Quartier de la Ripelle
PRECONISATIONS DE MONTAGE DE MURS EN FRONT URBAIN

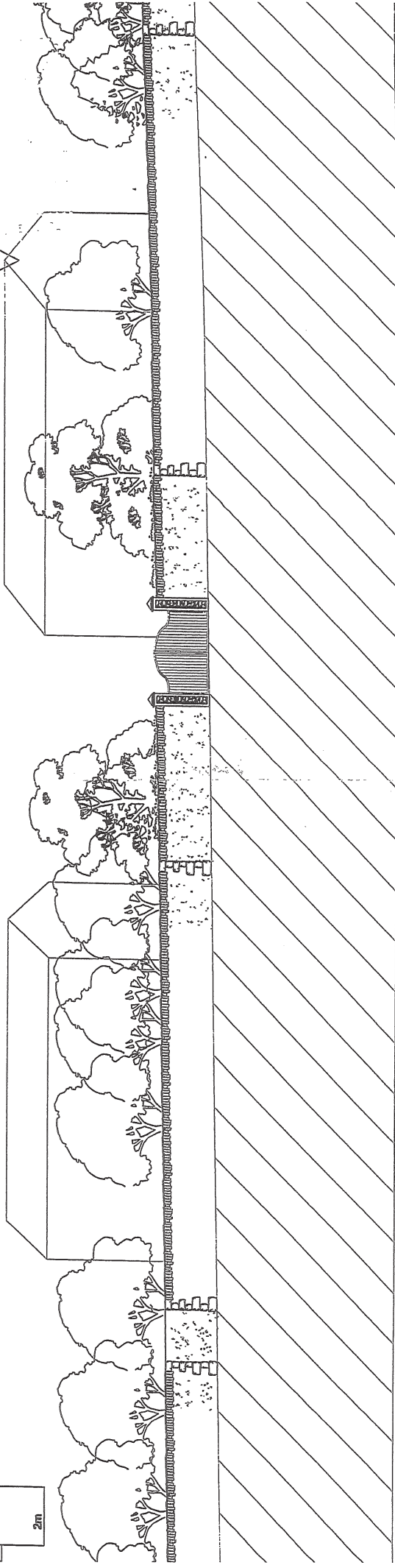
B



PROJET A - PLANCHE 4

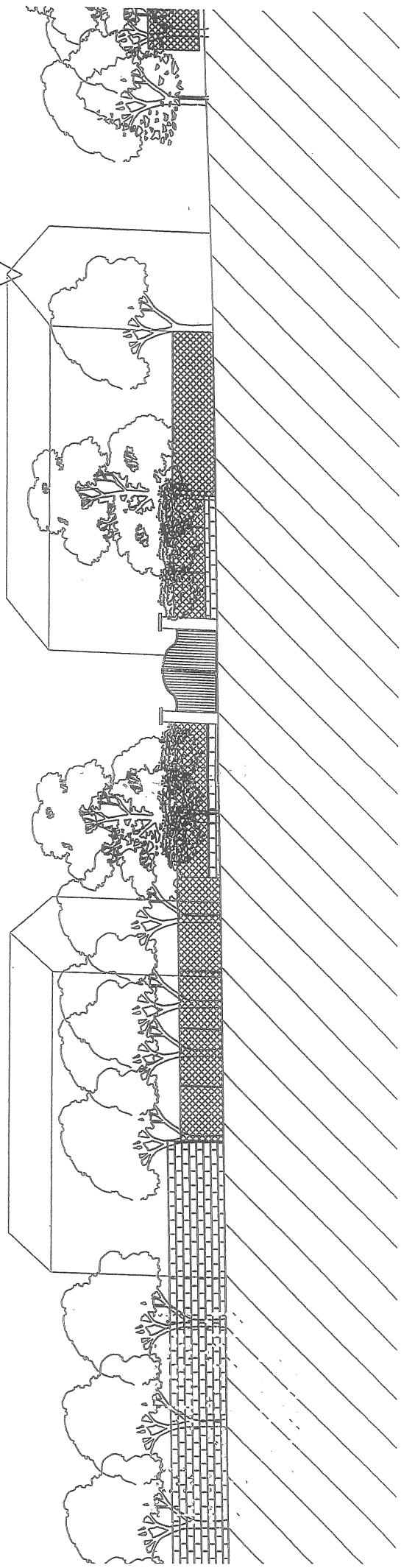


Construction habitation

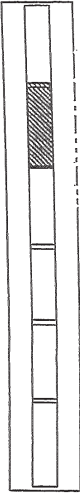


EXISTANT

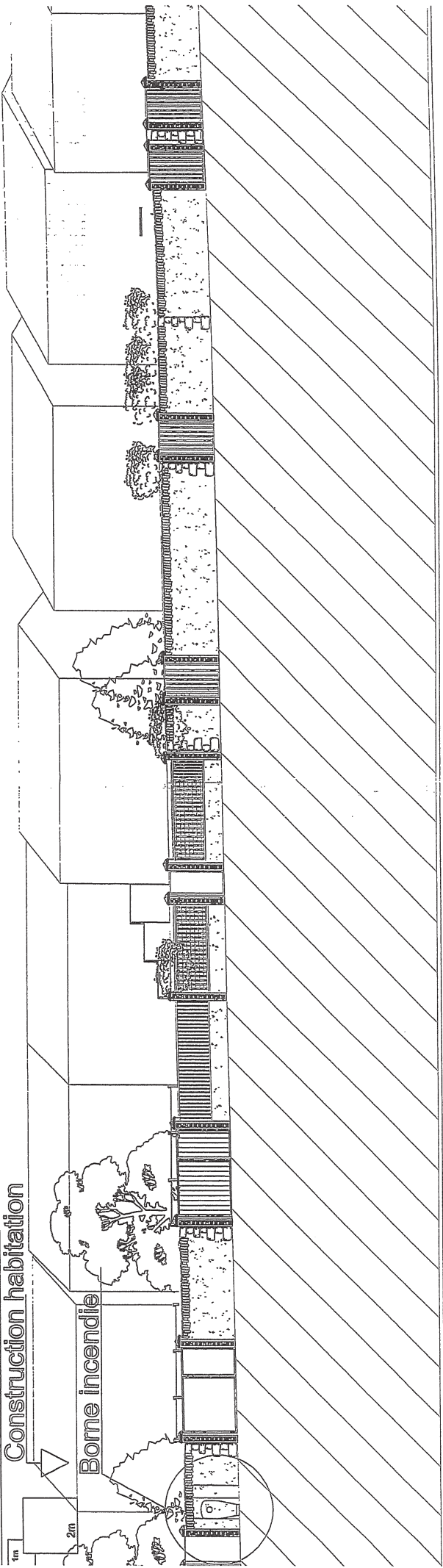
Construction habitation



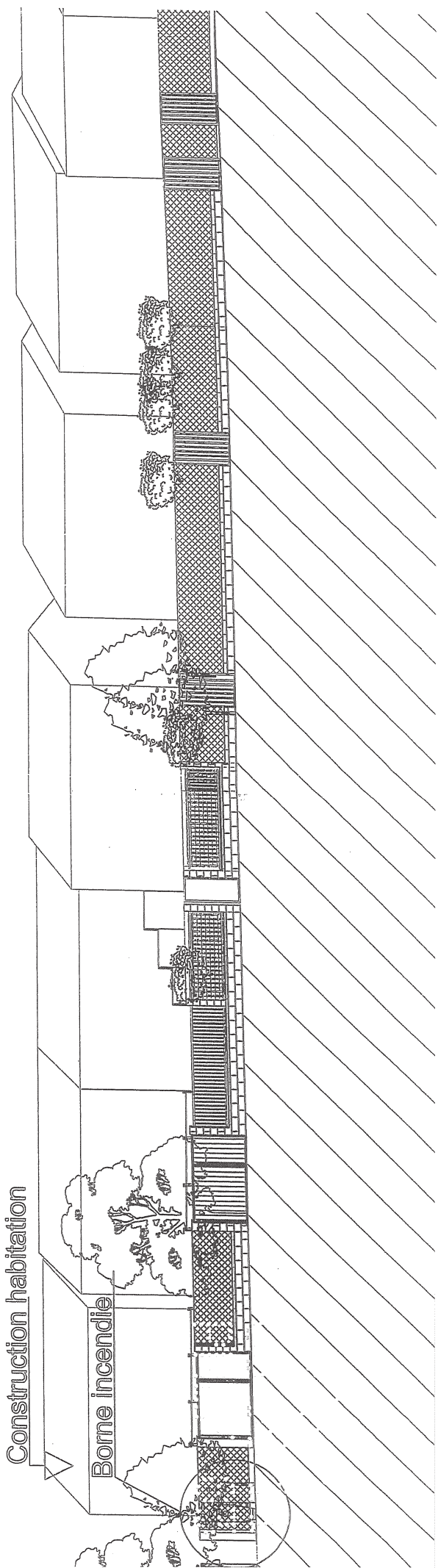
Quartier de la Ripelle
PRECONISATIONS DE MONTAGE DE MURS EN FRONT URBAIN



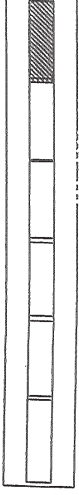
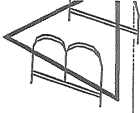
PROJET A - PLANCHE 5



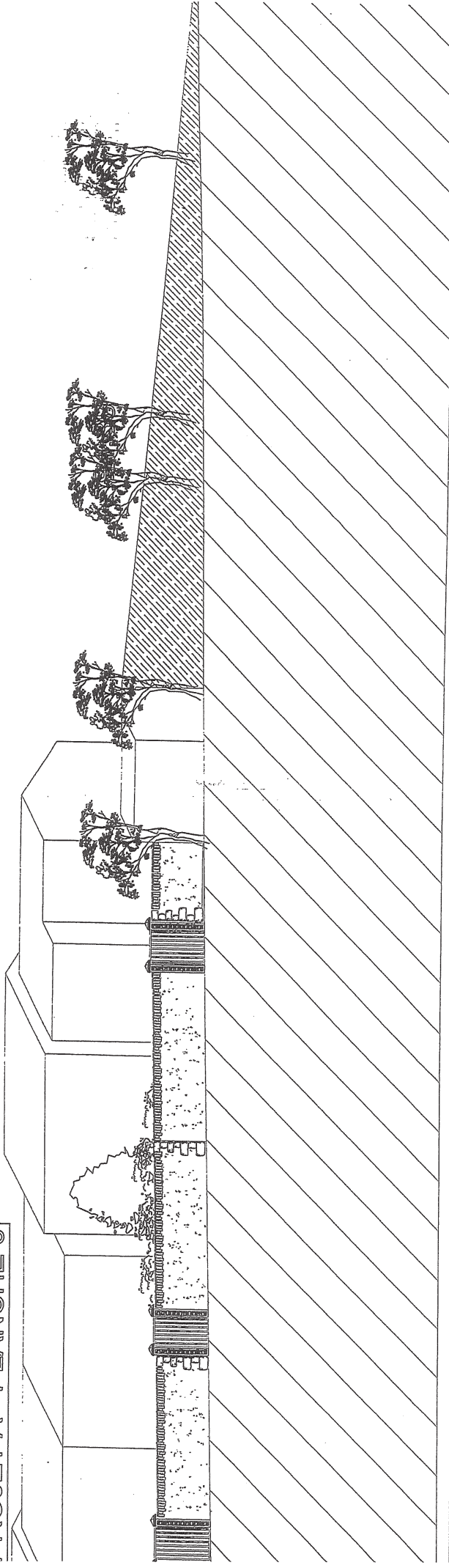
EXISTANT



Quartier de la Ripelle
PRECONISATIONS DE MONTAGE DE MURS EN FRONT URBAIN



PROJET A - PLANCHE 6



EXISTANT

