



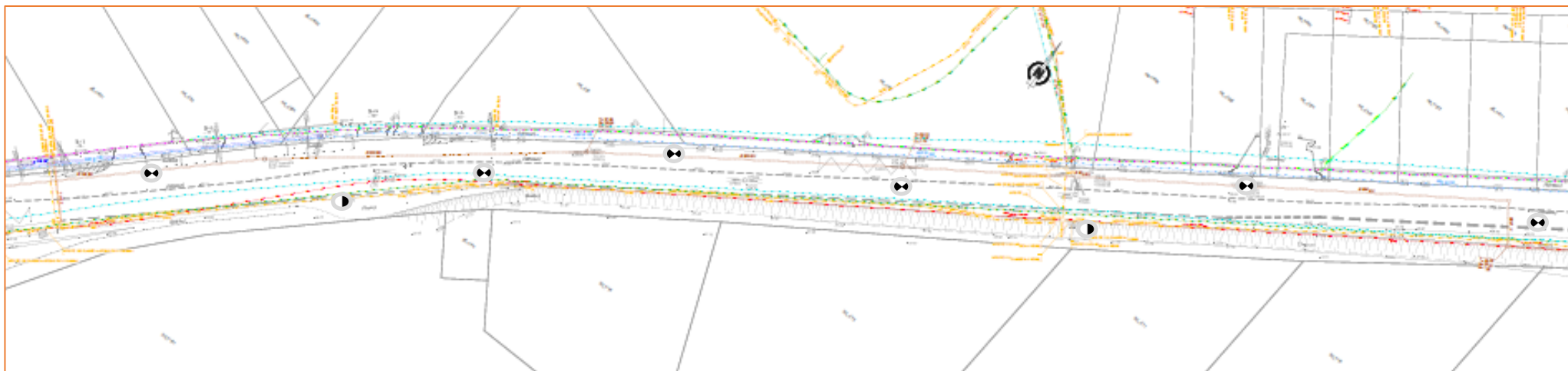




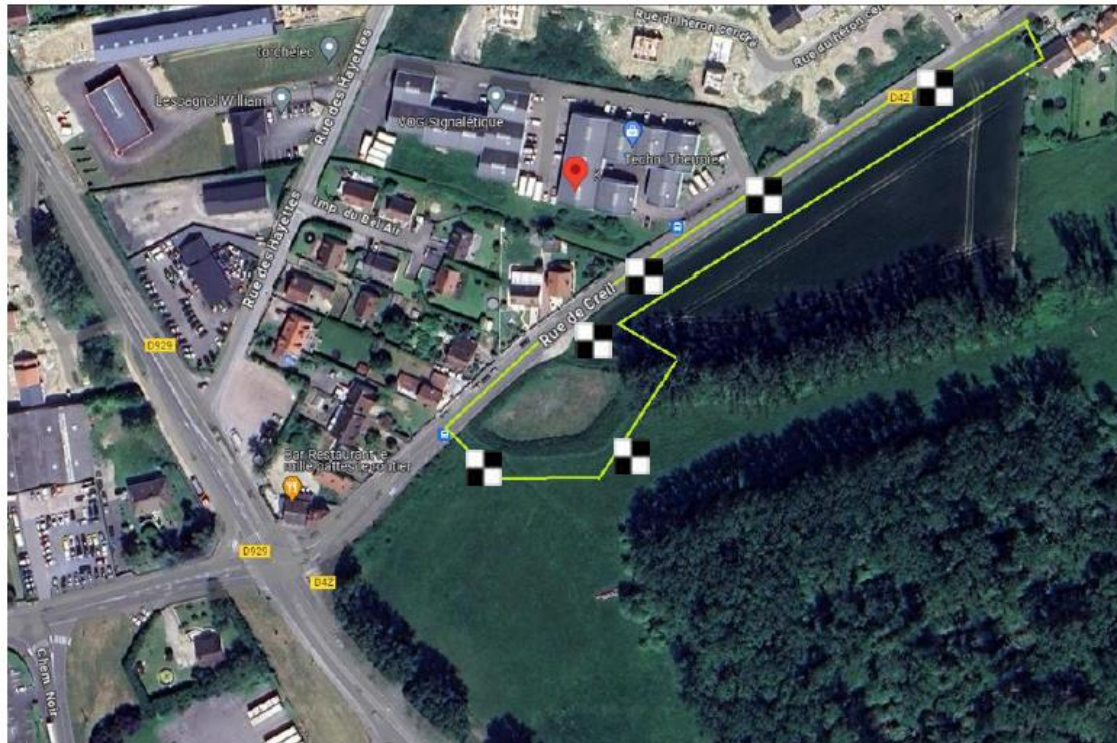






-  Sondage à la pelle mécanique + Matsuo (x6)
-  Sondage carotté voirie (x10)
-  Sondage carotté piste cyclable (x4)
-  Mesures de déflexion (NEXTROAD)
(tous les 20 soit 40 points – à placer en quinconce)



-  Sondage à la pelle mécanique + Matsuo (x6)
-  Sondage carotté voirie (x10)
-  Sondage carotté piste cyclable + Essai pénétrométrique (x4)
-  Mesures de déflexion (NEXTROAD) (tous les 20 soit 40 points – à placer en quinconce)

 **Essais de perméabilité :**



-  Sondage à la pelle mécanique + Matsuo (x6)
-  Sondage carotté voirie (x10)
-  Sondage carotté piste cyclable (x4)
-  Mesures de déflexion (NEXTROAD) (tous les 20 soit 40 points – à placer en quinconce)