



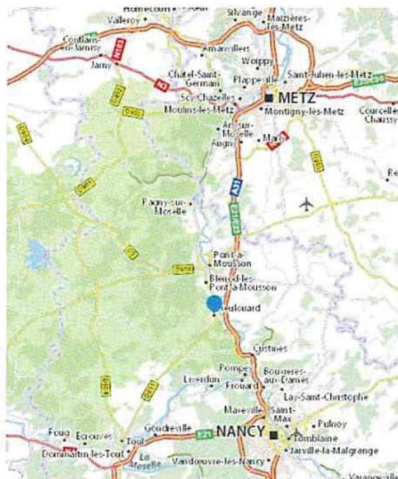
GPS Coordinates :
48° 50' 26" North
06° 04' 14" East

Dieulouard is situated between Pont-à-Mousson and Nancy, on the left bank of the Moselle River. This little town of about 5000 inhabitants has excellent connections due to its location.

The road system enables you to go to Toul (N411), Nancy or Metz (A31,N57) in half an hour. You can also use the rail transport.

Upstream of Dieulouard between the two branches of the Moselle River you can find fishing ponds.

This green city is located in the heart of the « Petite Suisse Lorraine », that's why it's the starting point of numerous hiking paths. There are also local shops.



Dieu lou warde



In the heart of the Lorraine
regional natural park

Welcome to

DIEULOUARD

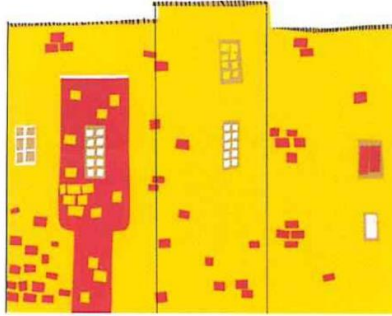


This brochure was entirely achieved by the pupils of Dieulouard Secondary School in collaboration with an illustrator, Karine Maincent (paper cut technique).

Photos : Jean François Durant, Nicolas Lecoq, Philippe Lefebvre

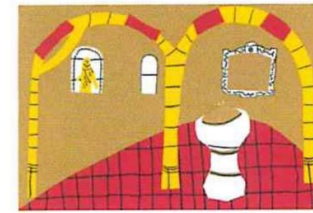
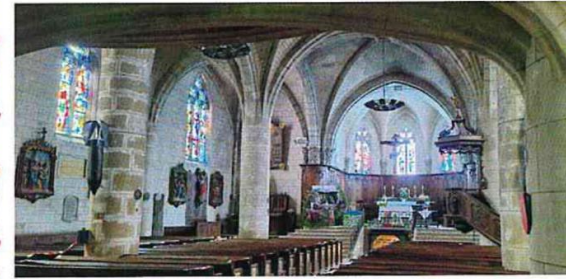
Discover the ancient city of Scarpone...

Scarpone comes from the Latin « Scarpona » which means « steep », referring to the steep cliffs nearby. At first, it was a Roman garrison. It reached its peak at the beginning of the 4th century under Constantine reign. The importance of the city lay in its geographical situation as it was situated on the « Via Agrippa » between Lyons and Trier.



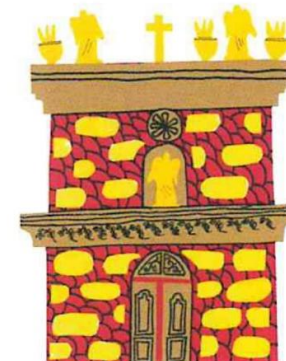
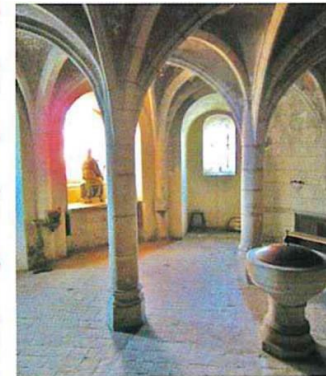
Dieulouard castle

Enjoy a trip back to the Middle Ages and discover the castle which dates back to 1000 ! It used to be a fortified house which became an impressive fortress in the 14th century. It was protected by the Bishop of Verdun who had said « Dieu lou warde ! » which means « God protect you » since you're far away. In 1660, the castle was partly destroyed. During the French Revolution, it became National Property and was parted into individual lodgings. It was classified « French Historical Building » in 1927.



Saint Sebastien Church

Come and discover the amazing Saint Sebastien Church ! The castle and the church were built at the same time, but both were destroyed during the Middle Ages. The portal was added in 1739, it's decorated with a statue of Saint Sebastien. Under the choir you can find an 11th century crypt which was entirely renovated in 2019. The church is also associated with the story of Joan of Arc. Indeed, it is said that she stopped in Dieulouard in 1429 and prayed in the crypt of the previous church.





The rose garden

It's based on the theme of the rose. The rose garden in front of the Castle was conceived and achieved by the Secondary School pupils.

The Gallo-Roman museum

Inside the castle this museum displays amazing Gallo-Roman artifacts from the Scarpona site as well as Gallo-Roman graves.

Around the castle...



The garden

It is situated in front of the museum and was achieved by the pupils of Dieulouard Secondary School. You can find plants and herbs which were used to cook and cure in the Medieval Times.





Over 30 kilometers of signposted and maintained trails are available around Dieulouard to walk or to cycle in the « Petite Suisse Lorraine ». Try the Long Hiking Trail GR5 or the trail connecting Nancy to Metz.

Notre-Dame des Airs

Have a look at the view from Notre Dame des Airs monument ! It was built just after the first World War to remind us of the place where the German troops were stopped. The inside looks like a chapel. It was built on the edge of a limestone cliff and it can be seen from far away thanks to the three-meter-high statue of Mary the Virgin at the top.



A stopover for Pilgrims on the way to Compostela



The first Compostela pilgrimage known in English as the Way of Saint James took place at the beginning of the 9th century. The town of Dieulouard is one of the stopovers of this route which was declared the first European Cultural Route by the council of Europe, in 1987. A tourist shelter is available for the dozens of pilgrims who stop at the castle each year.



You can walk back to the city center along dry-stone walls.

