








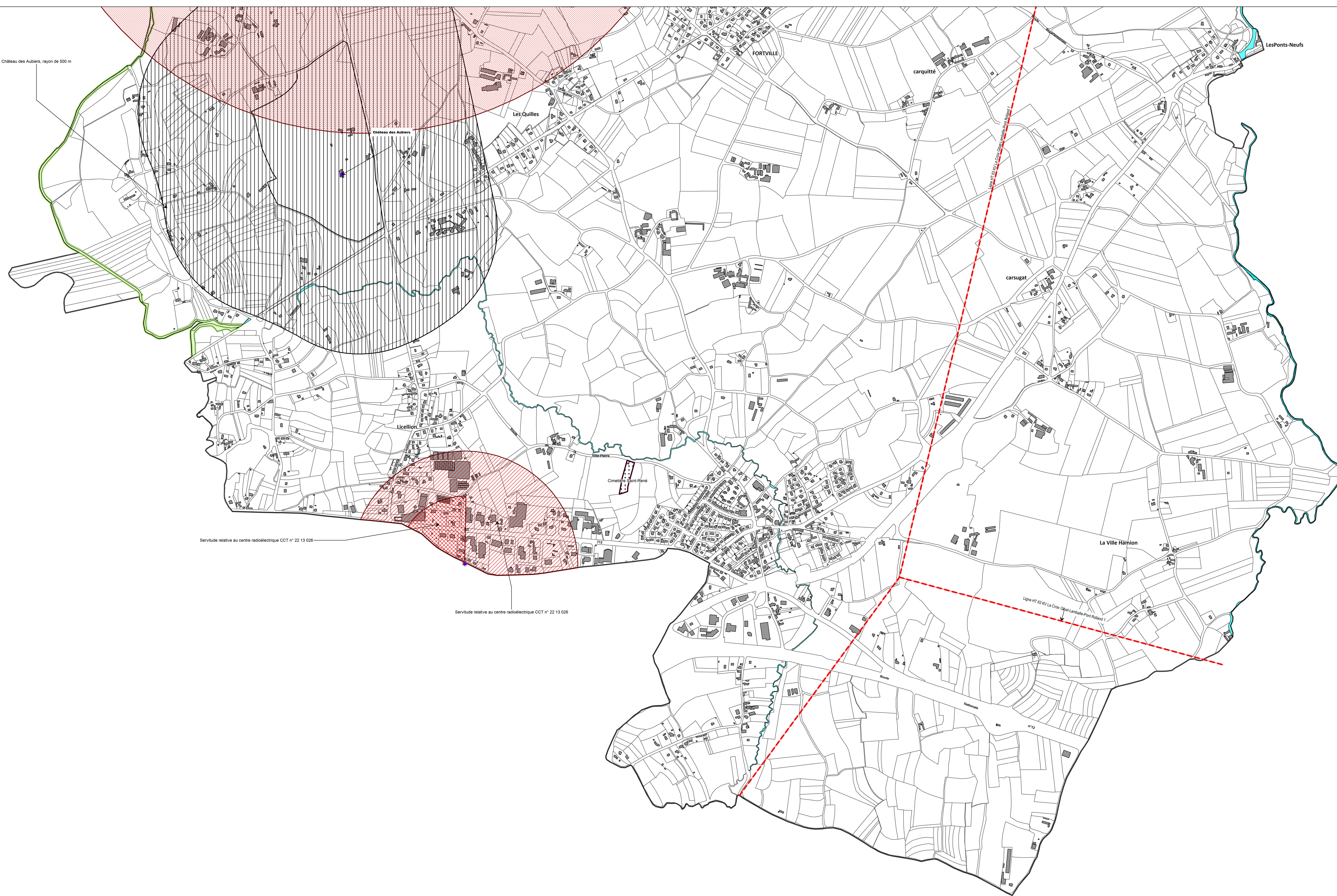


LEGENDE

SERVITUDES

-  Etablissement des canalisations électriques I4
-  Passage piétons sur le littoral EL9
-  Protection des cimetières INT1
-  Protection monument historique AC1
-  Transmission radioélectrique PT1
-  Transmission radioélectrique PT2
-  Transmissions radioélectriques protection des centres PT1

Château des Aubiers, rayon de 500 m



Servitude relative au centre radioélectrique CCT n° 22 13 026

Servitude relative au centre radioélectrique CCT n° 22 13 026

Ligne HT 63 KV La Croix Opal-Lambour-Pont Rubert 1