

UNION MUSICALE « La Liberté »
Saint Maurice La Clouère

Jean-Marc Neveux

ACCORDS DE GUITARE

Accords les plus simples
Sans grand barré

Niveau Débutant

Précisions



Les ronds bleus sont les cases où il faut appuyer



Les ronds blancs sont les cordes qu'il faut laisser résonner



Les croix noirs sont les cordes qu'il ne faut pas activer

On a toujours l'impression qu'il y a des accords qui sont inaccessibles et donc des chansons qui ne sont réservées qu'aux « autres », lorsque l'on ne sait faire que des accords simples (sans grand barré) ... *Tel n'est pas le cas.* Il faut seulement apprendre ces accords un peu moins courant et pas nécessairement plus compliqué. Toutes les chansons sont réalisables...Bon courage

La simplicité mène directement au plaisir.

A signifie La

B signifie Si

Rappel

C signifie Do

D signifie Ré

E signifie Mi

F signifie Fa

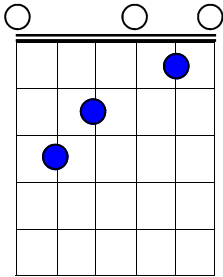
G signifie Sol

Les accords présentés ici ne sont pas les seuls possibles, loin s'en faut. Ce sont les accords qui sont utilisés pendant les cours de guitare ou les Ateliers d'Initiation Musicale « Sonatica ».

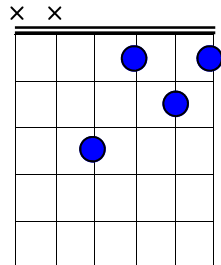
Janvier 2013

ACCORDS MAJEURS

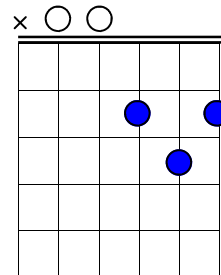
C



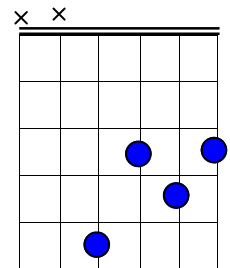
C# Db



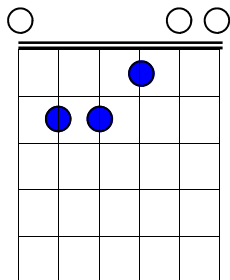
D



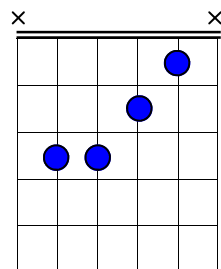
D# Eb



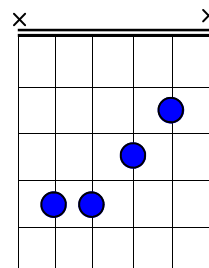
E



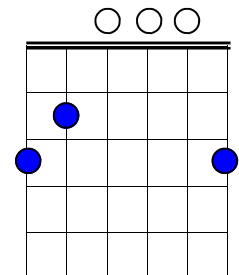
F



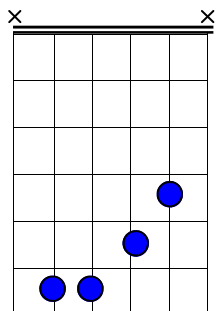
F# Gb



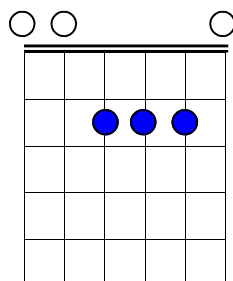
G



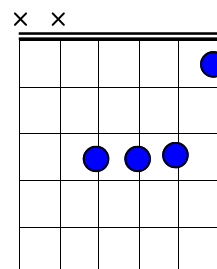
G# Ab



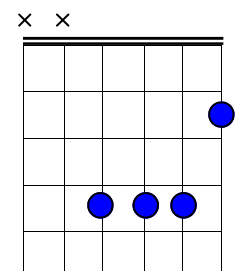
A



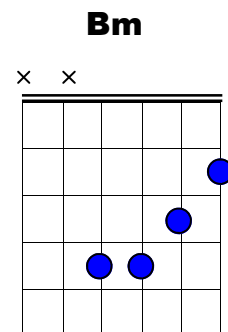
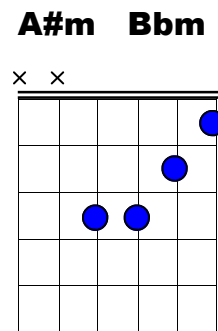
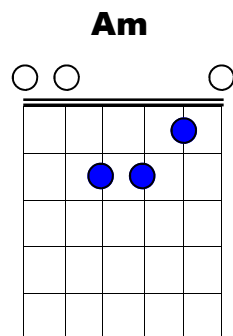
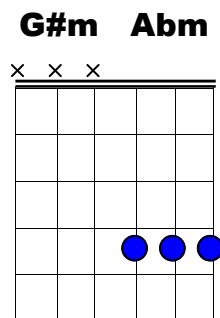
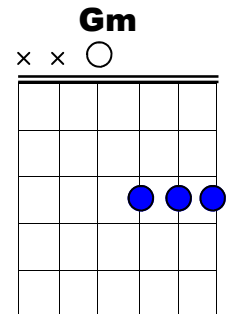
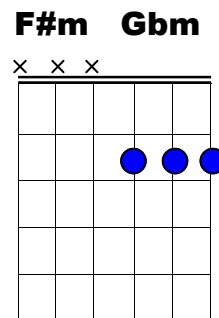
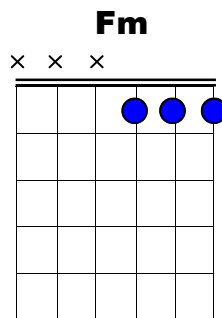
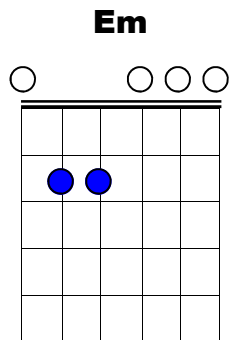
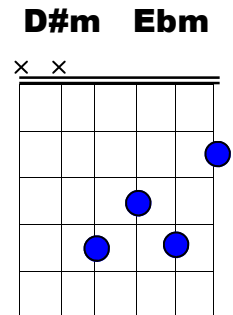
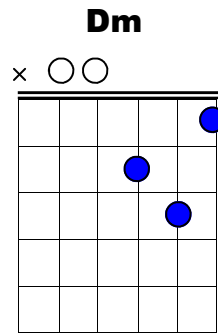
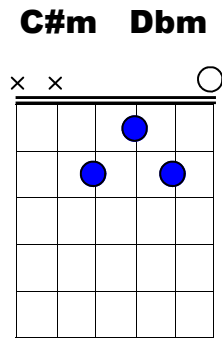
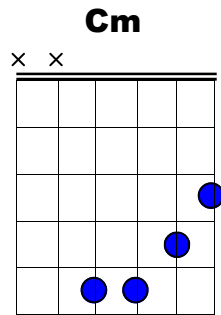
A# Bb



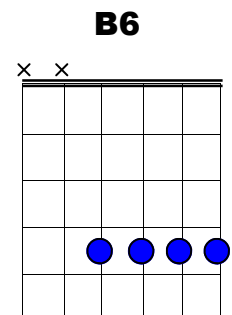
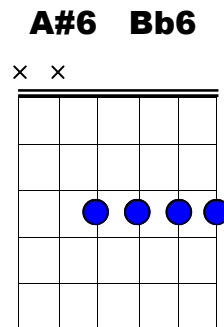
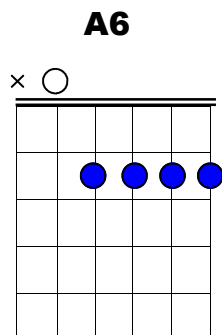
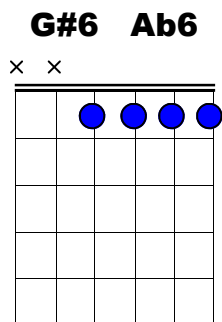
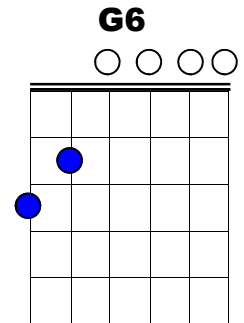
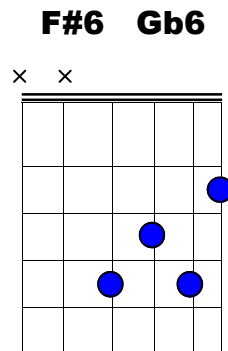
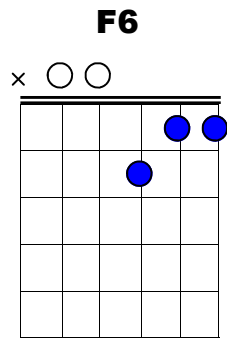
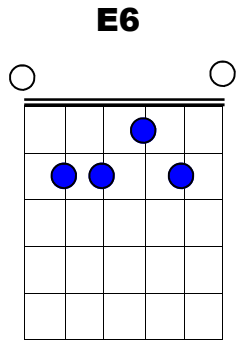
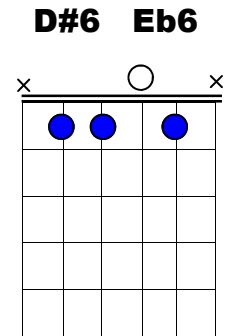
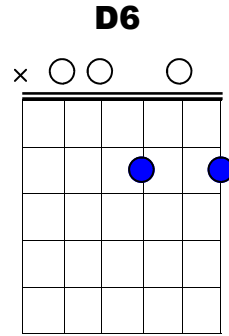
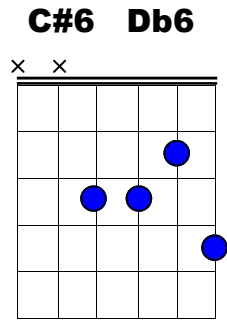
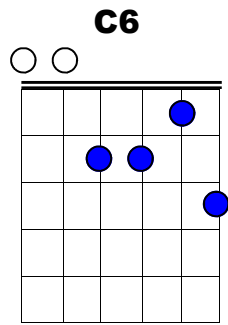
B



ACCORDS MINEURS

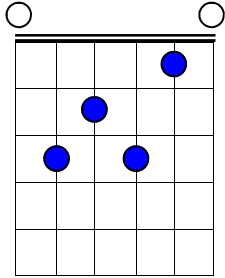


ACCORDS DE SIXIEME

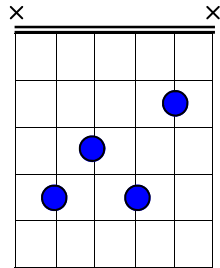


ACCORDS DE SEPTIEME

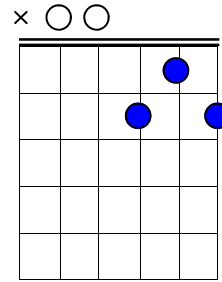
C7



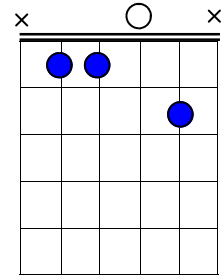
C#7 Db7



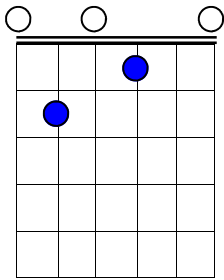
D7



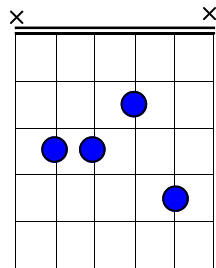
D#7 Eb7



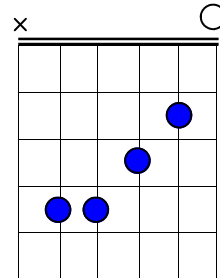
E7



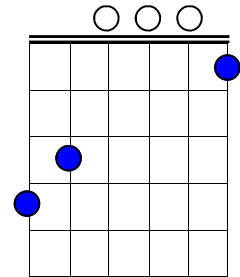
F7



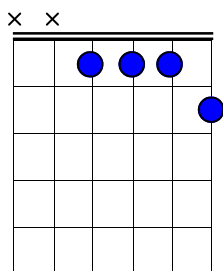
F#7 Gb7



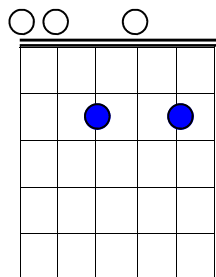
G7



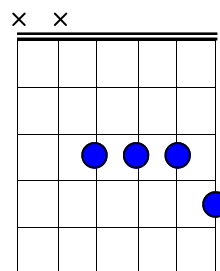
G#7 Ab7



A7



A#7 Bb7



B7

