

UNION MUSICALE « La Liberté »
Saint Maurice La Clouère

Jean-Marc Neveux

ACCORDS DE GUITARE

pour gaucher

Accords les plus simples
Sans grand barré

Précisions

- *Les ronds bleus sont les cases où il faut appuyer*
- *Les ronds blancs sont les cordes qu'il faut laisser résonner*
- ✕ *Les croix noires sont les cordes qu'il ne faut pas activer*

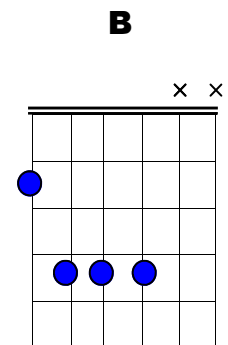
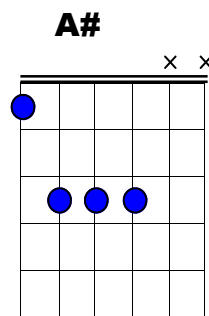
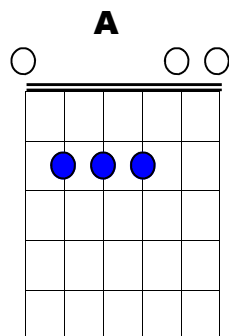
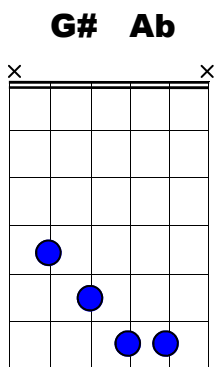
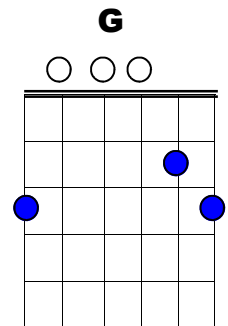
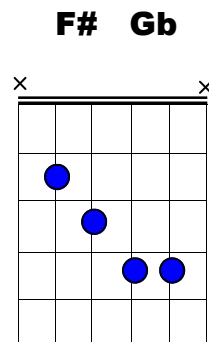
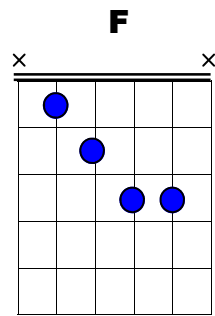
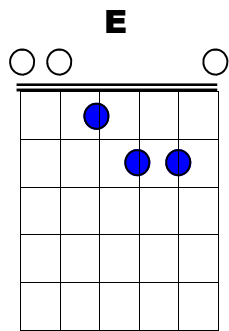
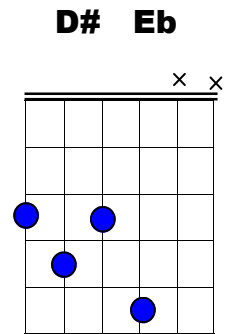
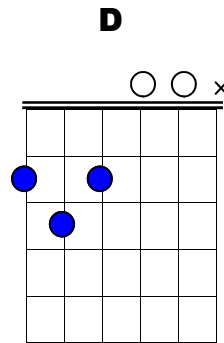
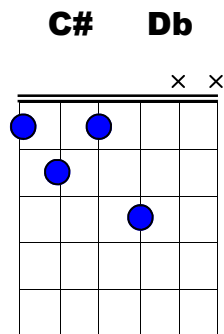
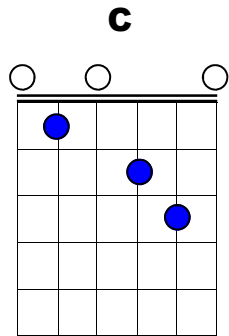
On a toujours l'impression qu'il y a des accords qui sont inaccessibles et donc des chansons qui ne sont réservées qu'aux « autres », lorsque l'on ne sait faire que des accords simples (sans grand barré) ... *Tel n'est pas le cas. Il faut seulement apprendre ces accords un peu moins courants et pas nécessairement plus compliqués. Toutes les chansons sont réalisables...Bon courage*
La simplicité mène directement au plaisir.

A signifie La **B** signifie Si **C** signifie Do **D** signifie Ré
E signifie Mi **F** signifie Fa **G** signifie Sol

Les accords présentés ici ne sont pas les seuls possibles, loin s'en faut. Ce sont les accords qui sont utilisés pendant les cours de guitare ou les Ateliers d'Initiation Musicale « Sonatica ».

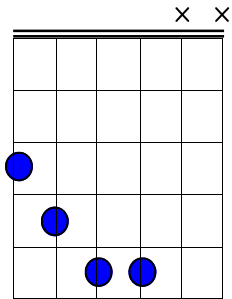
Janvier 2013

ACCORDS MAJEURS

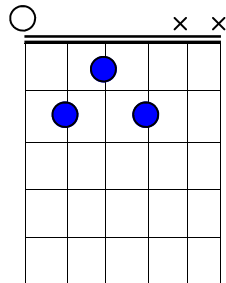


ACCORDS MINEURS

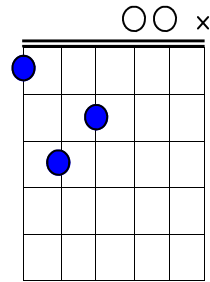
Cm



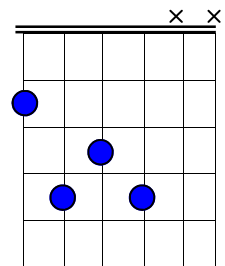
C#m Dbm



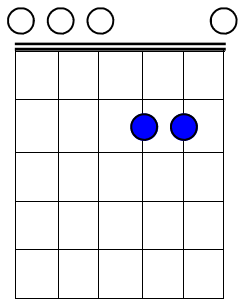
Dm



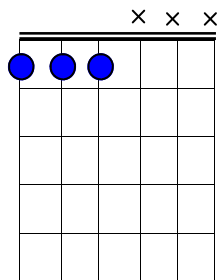
D#m Ebm



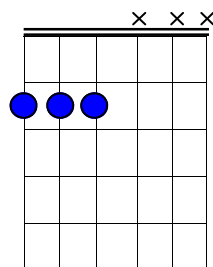
Em



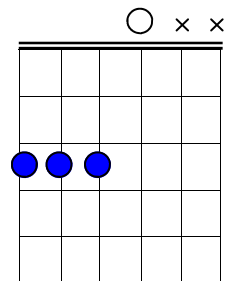
Fm



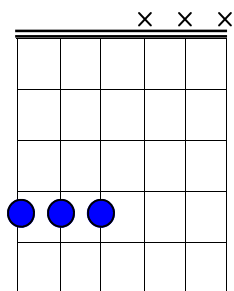
F#m Gbm



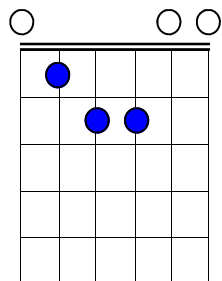
Gm



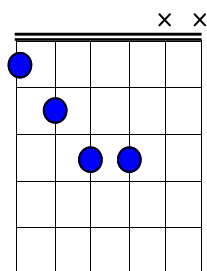
G#m Abm



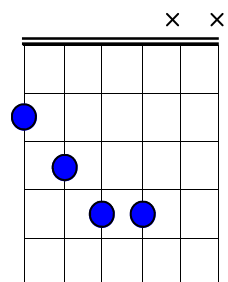
Am



A#m Bbm

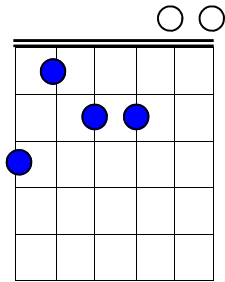


Bm

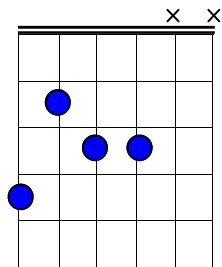


ACCORDS DE SIXIEME

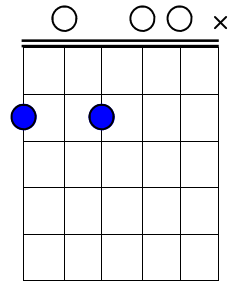
C6



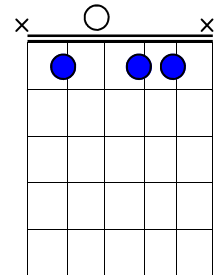
C#6 Db6



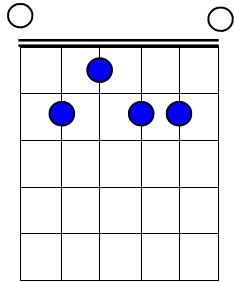
D6



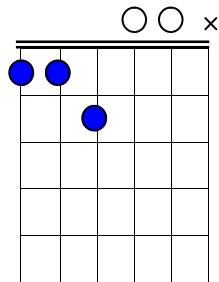
D#6 Eb6



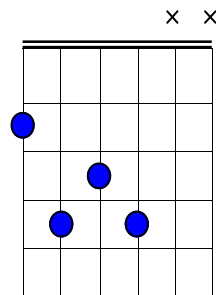
E6



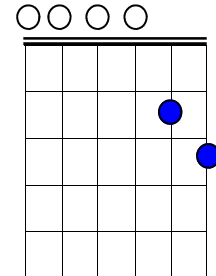
F6



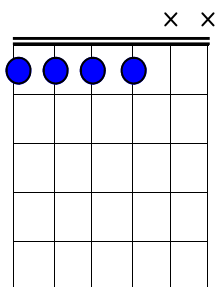
F#6 Gb6



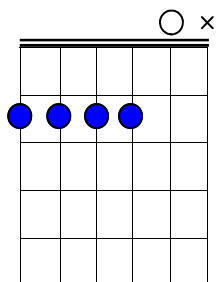
G6



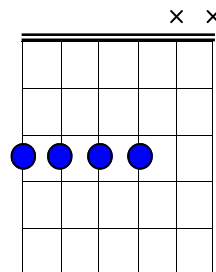
G#6 Ab6



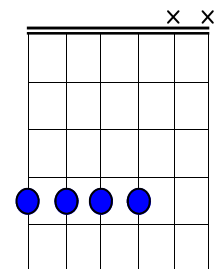
A6



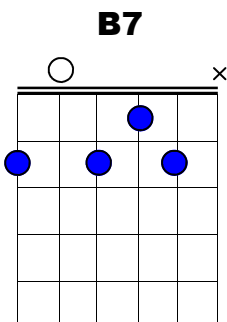
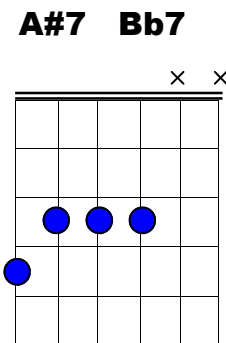
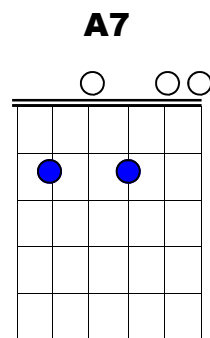
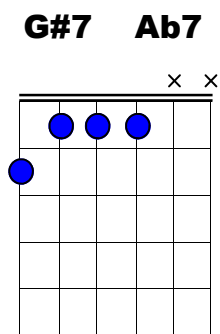
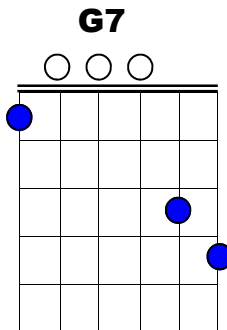
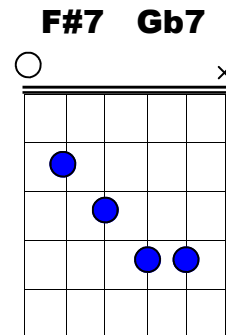
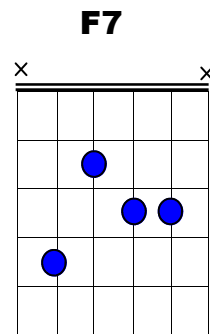
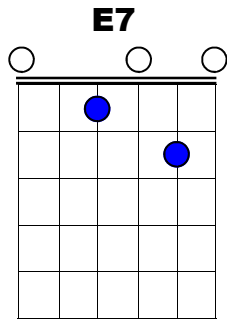
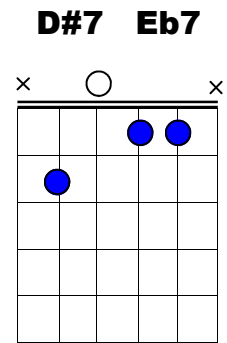
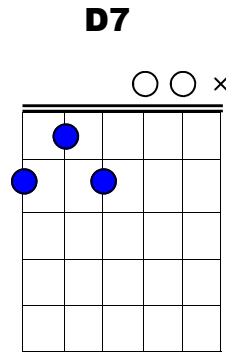
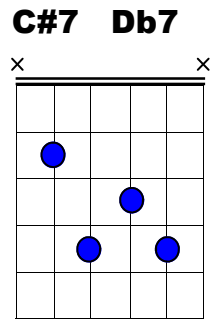
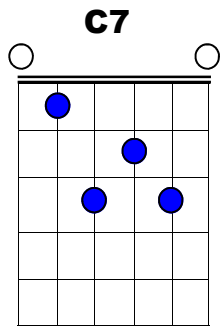
A#6 Bb6



B6



ACCORDS DE SEPTIEME



The image displays a comprehensive set of guitar chord diagrams, organized into four main sections: Major, Minor, 6, and 7 chords. Each section contains diagrams for all twelve keys, with some keys having two alternative voicings. The diagrams are presented on a 6-string grid with frets 1 through 5. Frets are indicated by blue dots (fretted notes) and white circles (open strings). Bar lines above the strings indicate barre positions. 'x' marks indicate muted strings, and 'o' marks indicate open strings. The keys are arranged in rows: Major (C, D, E, F, G, A, B), Minor (Cm, Dm, Em, Fm, Gm, Am, Bm), 6 (C6, D6, E6, F6, G6, A6, B6), and 7 (C7, D7, E7, F7, G7, A7, B7). Within each key, the diagrams are labeled with their respective chord names, such as C, Cm, C6, and C7.