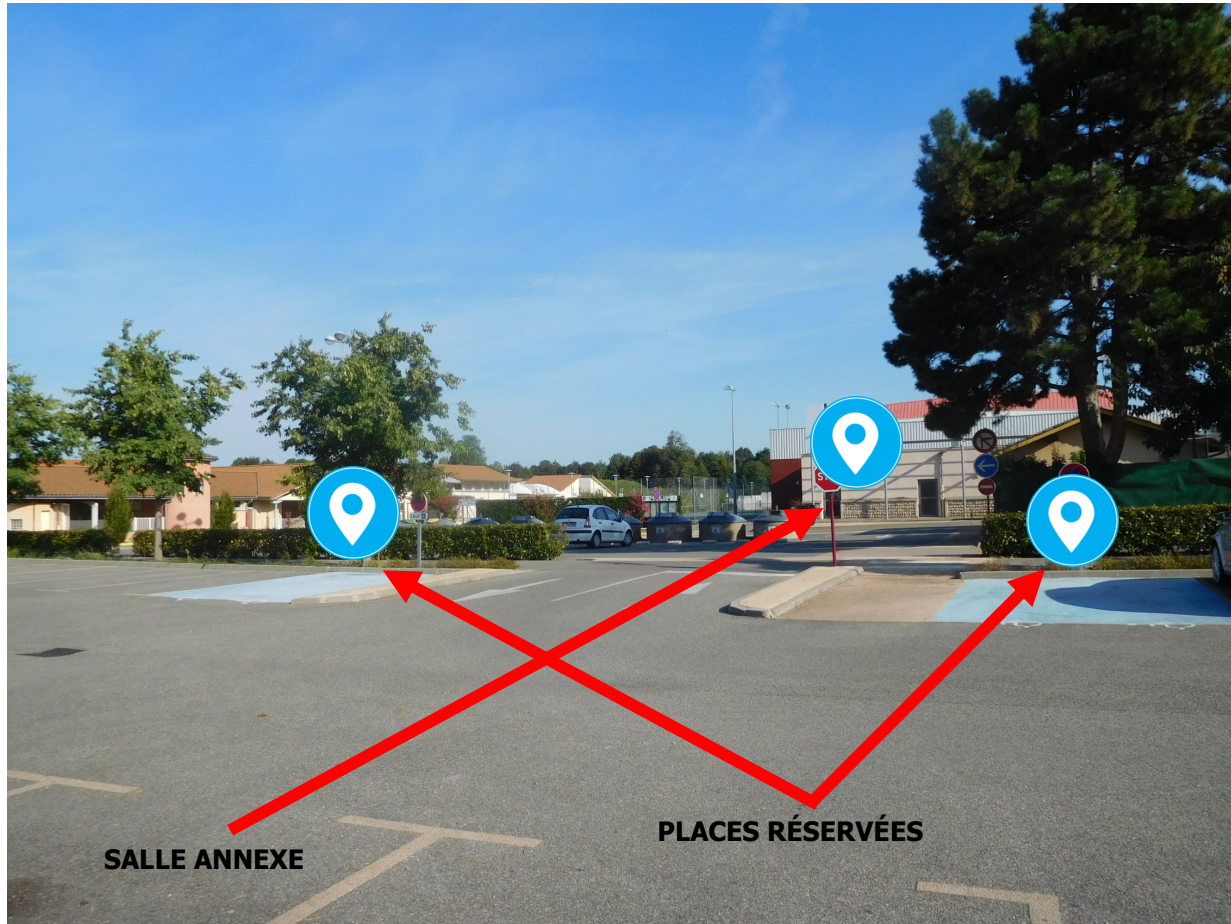


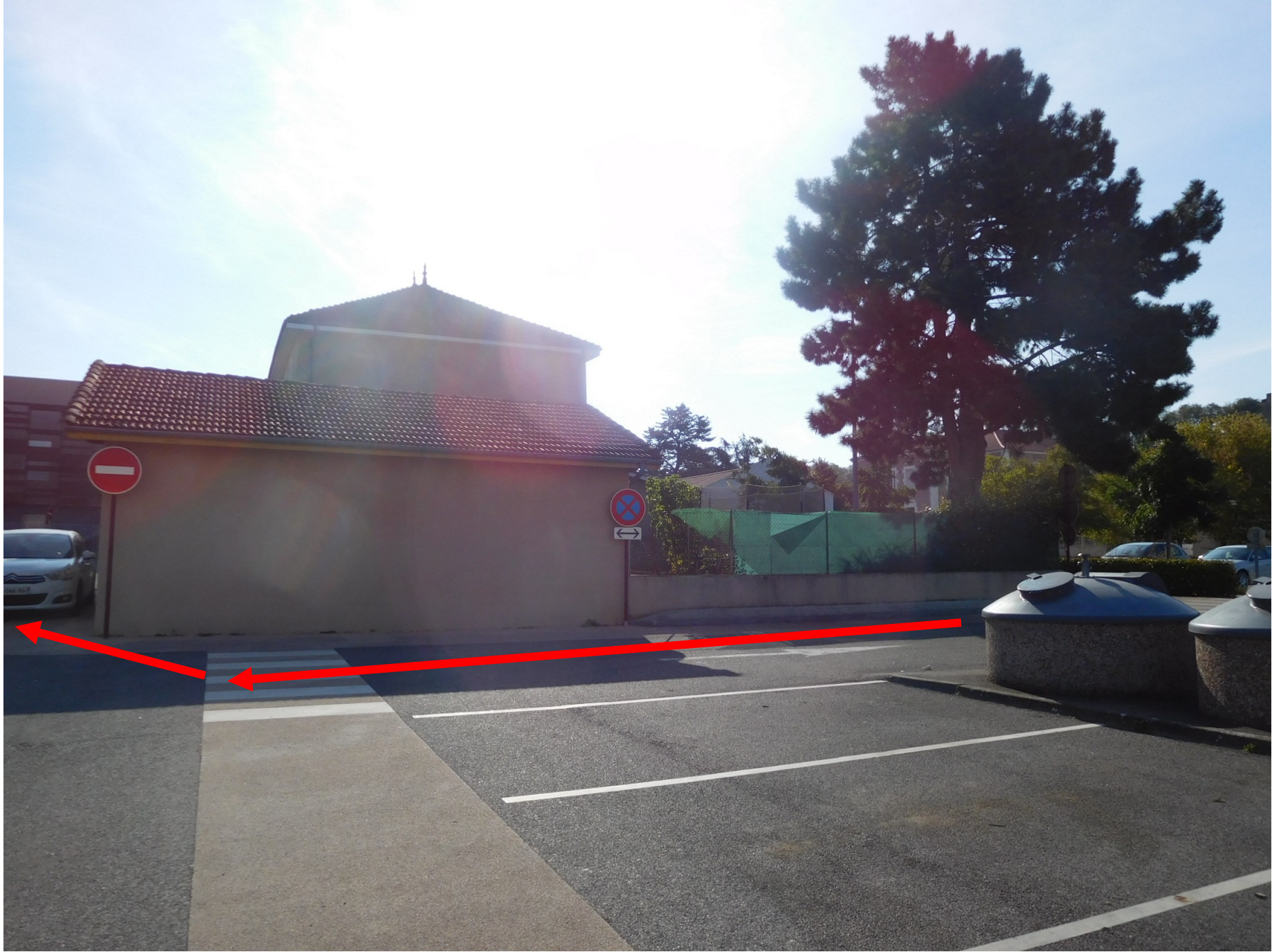
# CHEMINEMENT POUR UNE PERSONNE A MOBILITE REDUITE - SALLE POLYVALENTE

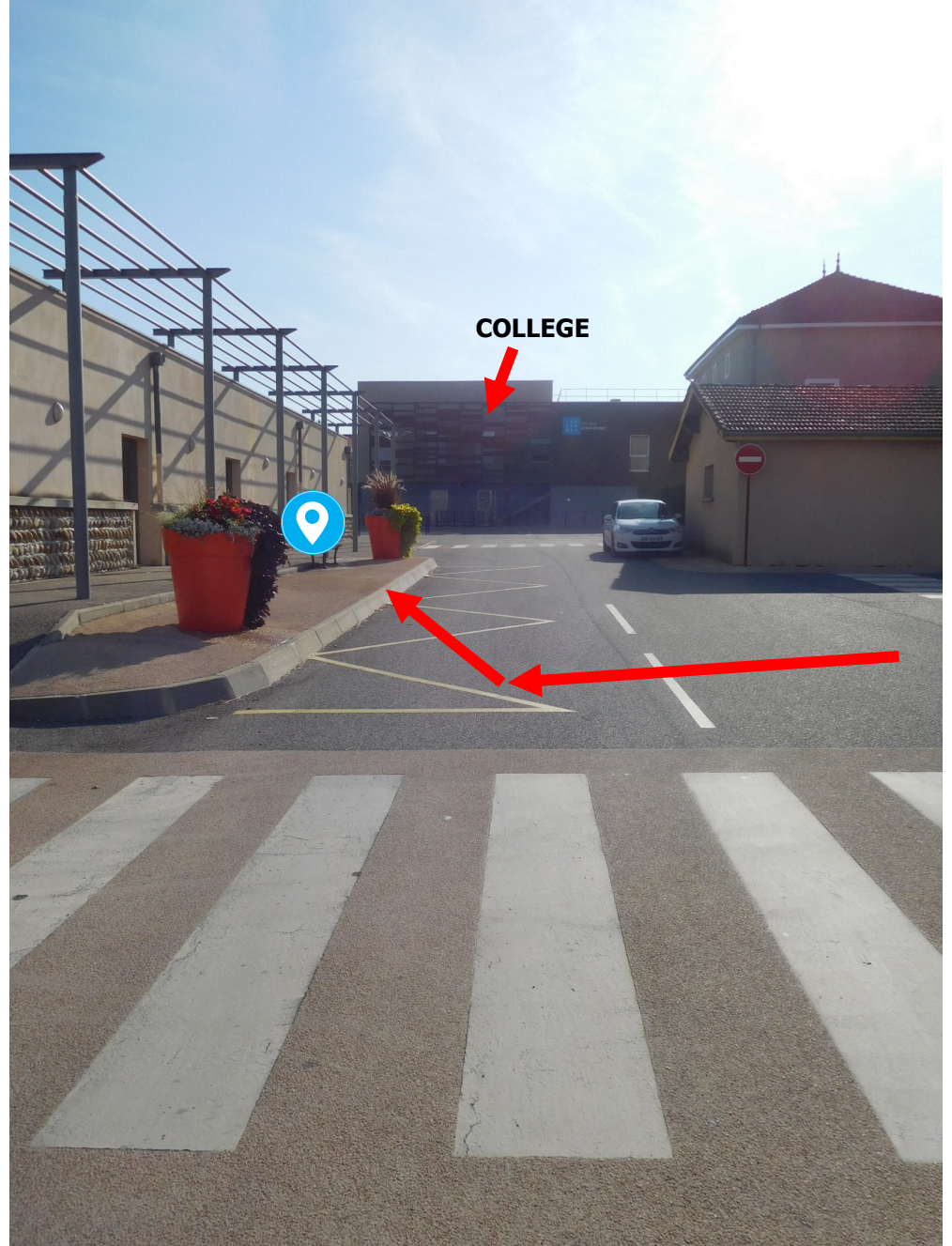


**PARKING—PLACES RÉSERVÉES**

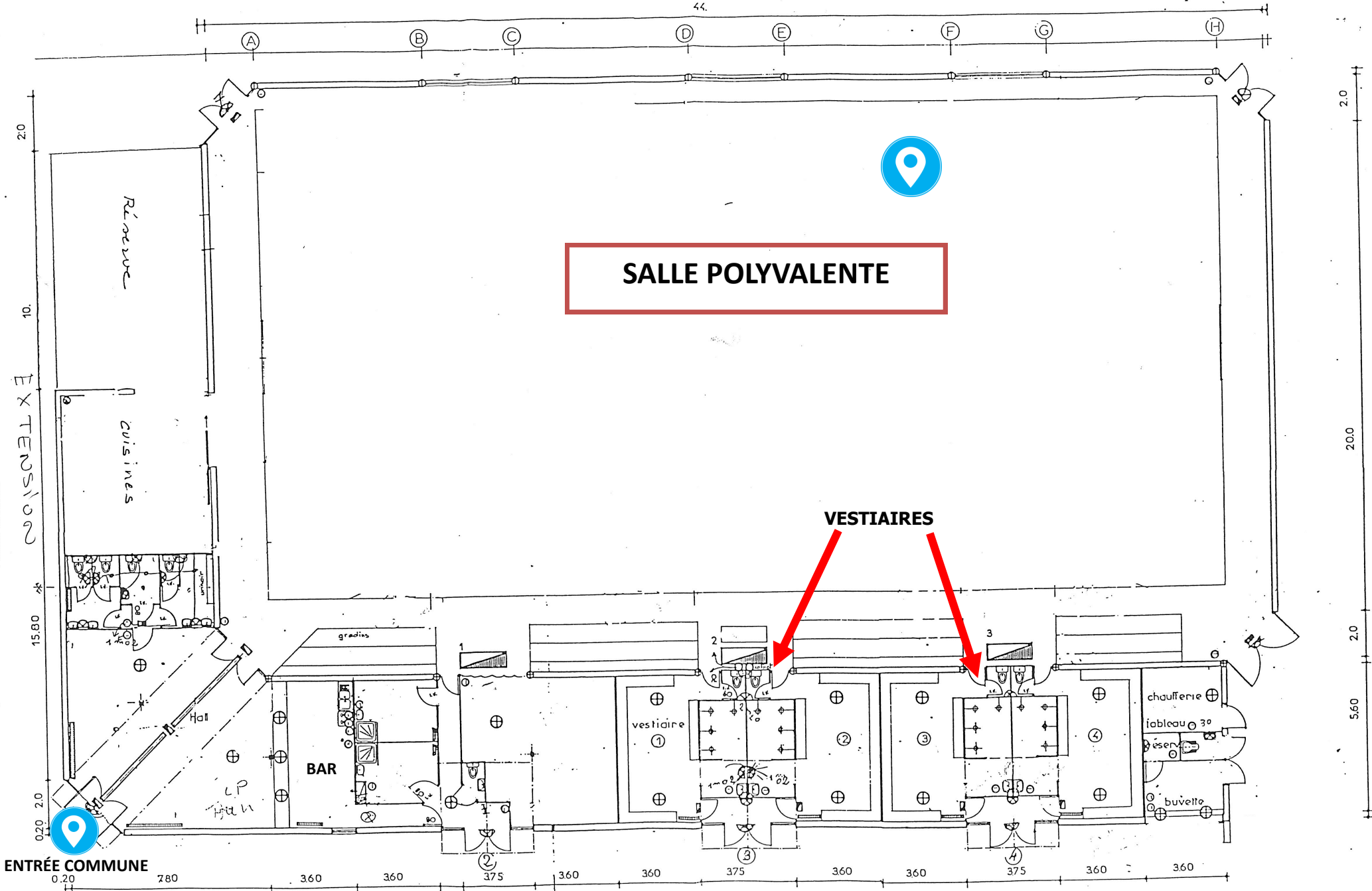
**EN DIRECTION DE LA SALLE  
ANNEXE/SALLE POLYVALENTE**







**SALLE ANNEXE**



**SALLE POLYVALENTE**

**VESTIAIRES**

**ENTRÉE COMMUNE**

**SALLE POLYVALENTE/ANNEXE**

**CUISINE**



44.

A

B

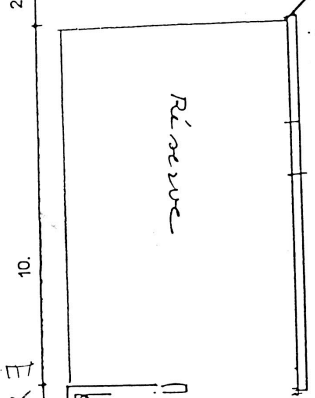
C

D

E

G

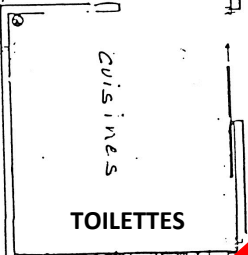
H



Réserve

10.

EXTENSION



cuisines

TOILETTES

15.80

0.20 2.0



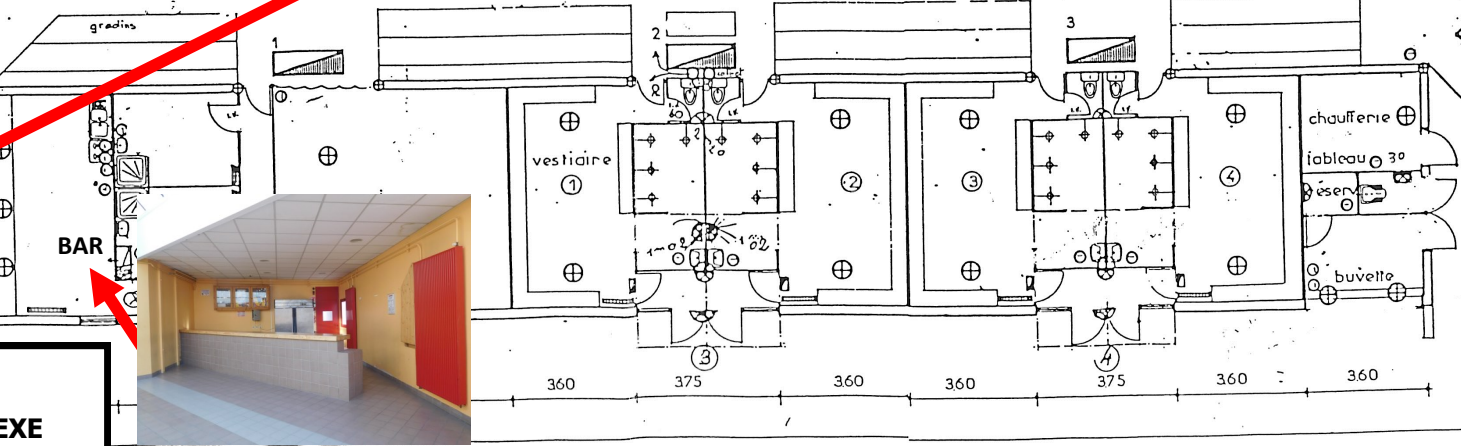
VES-

2.0

20.0

2.0

5.60



BAR

vestiaire ①

②

③

④

chaufferie

tableau 30

buvette

360

375

360

360

375

360

360

**ENTRÉE COMMUNE**

**SALLE POLYVALENTE/ANNEXE**

